

Kristin beth Powers

Portfolio

B.F.A. – Rhode Island School of Design – Ceramics – '86

M.F.A. – Massachusetts College of Art & Design – Sculpture – '22

In Communication

2023

4' x 5' x 3'

Cast Ceramic, Steel Rods & Plates,
Couch Springs, Compression Springs,
Vibratory Motors.







Oneira - even in
sleep i am
exposed.

2021
29' x 14' x 7'
Gleaned Furniture,
Bedding, Rope.

Of Greek origin,
Oneira means
dream, dreaming,
or a dreamlike
state.



Falling - A Spatial Installation

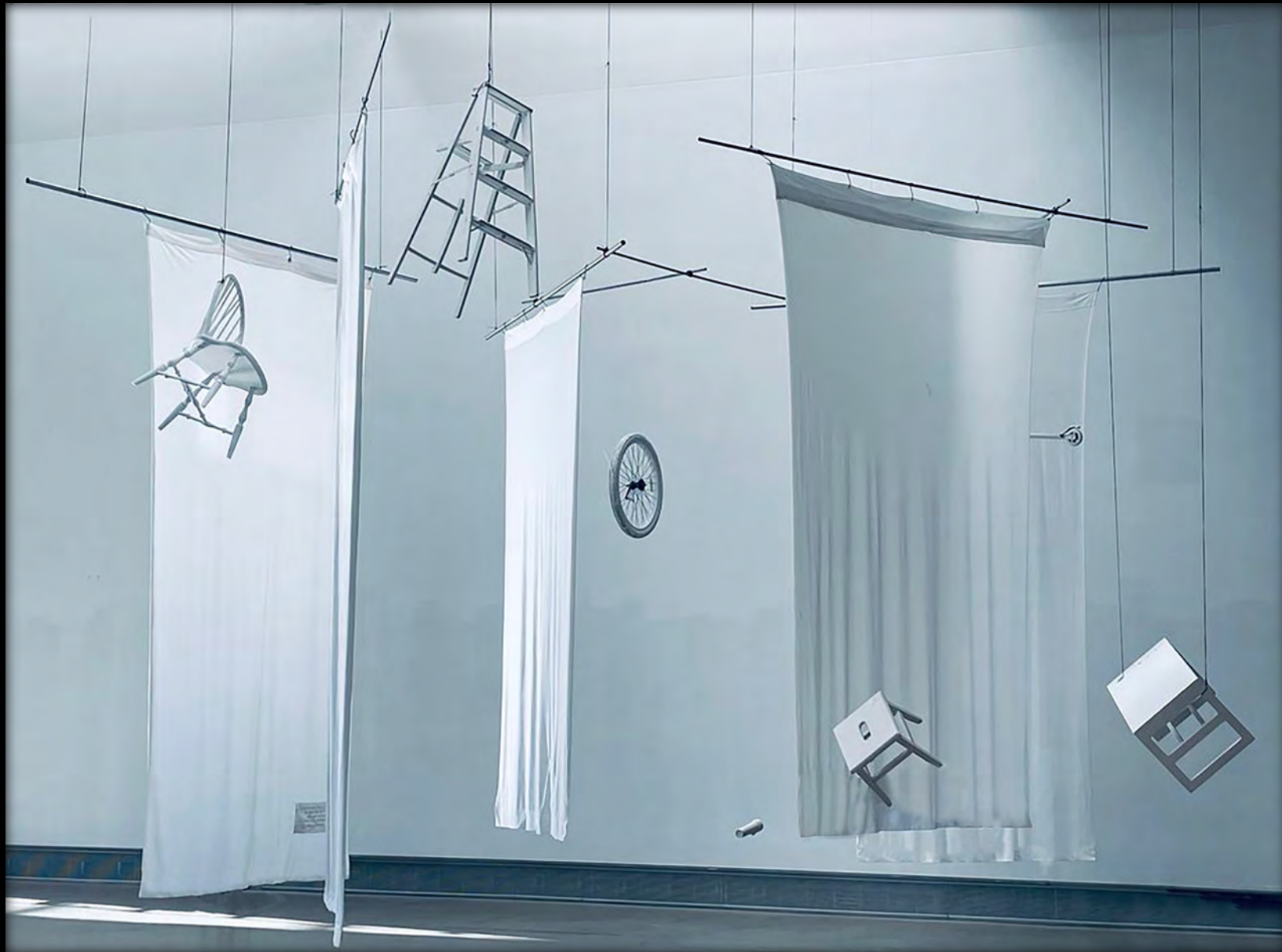
by Kristin b Powers

Falling

2021

20' x 15' x 10'

Fabric, Gleaned Objects, White Paint, Projected Animation from 4 Projectors,
Sound, Aluminum Piping



Blowing Glass

2022

22" x 12" x 6"

Radiator, Glass, Blue Light





Embracing
Light

2022
Stool, Ladder,
Ping Pong Balls,
Glass, Blue Light,
White Paint



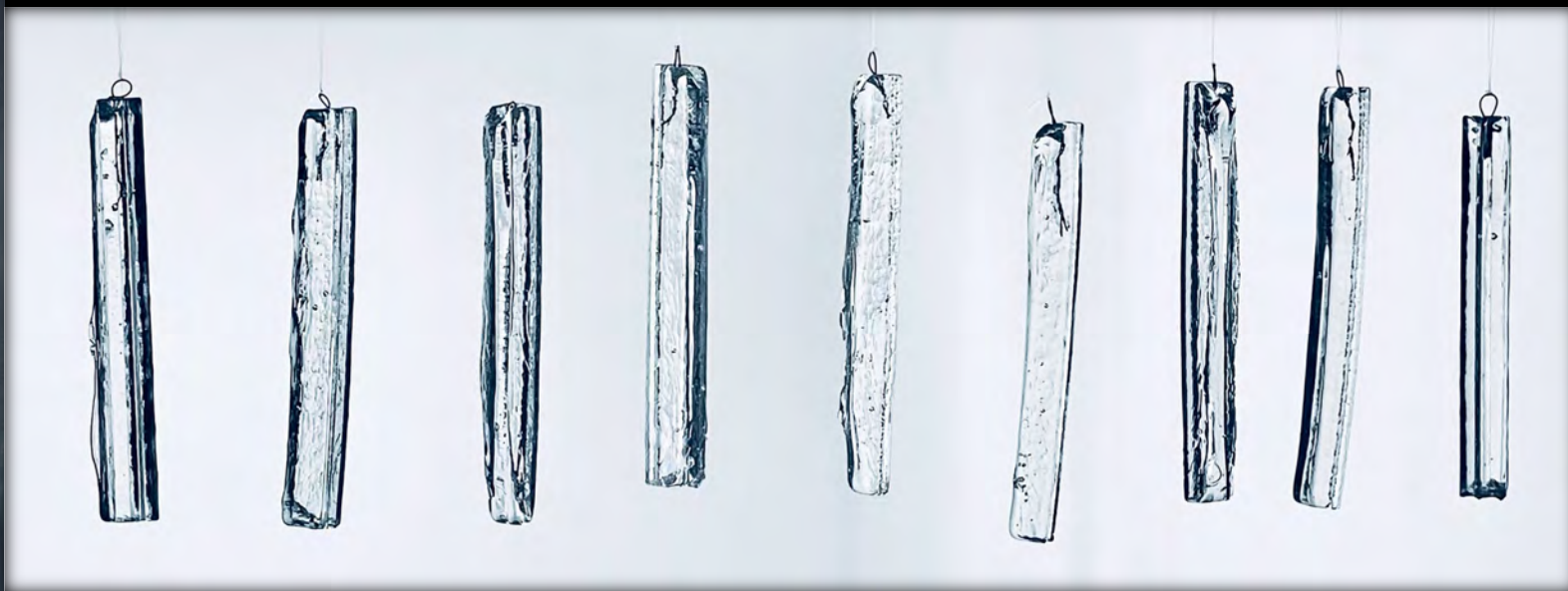
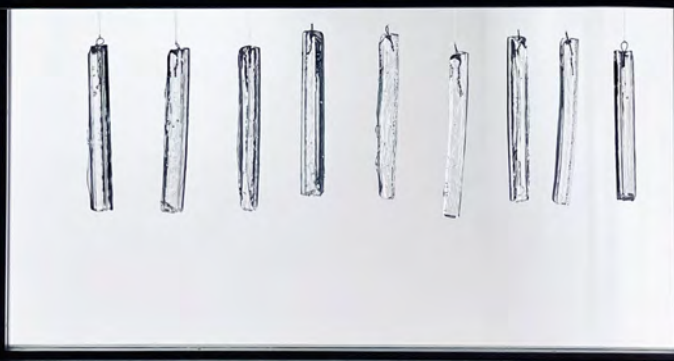
there's a hole in my heart where the wind blows through

2022

10' x 10' x 14'

Working with blue light, gleaned objects, xrays and fingernails, sound and animation, movement and language, I play on engineering interdependence and balance. Embracing silence, vulnerability, and disorientation, forgotten objects collide: a chair, a spoon, a ladder, a bicycle wheel. Memories of loss and grief, lives in disrepair, this work is about worlds, families, and homes falling apart. White finds anonymity within which to mourn.





Frozen in Time

2021

16" x 48" x 2"

Cast Glass, Wire, Fishing Line



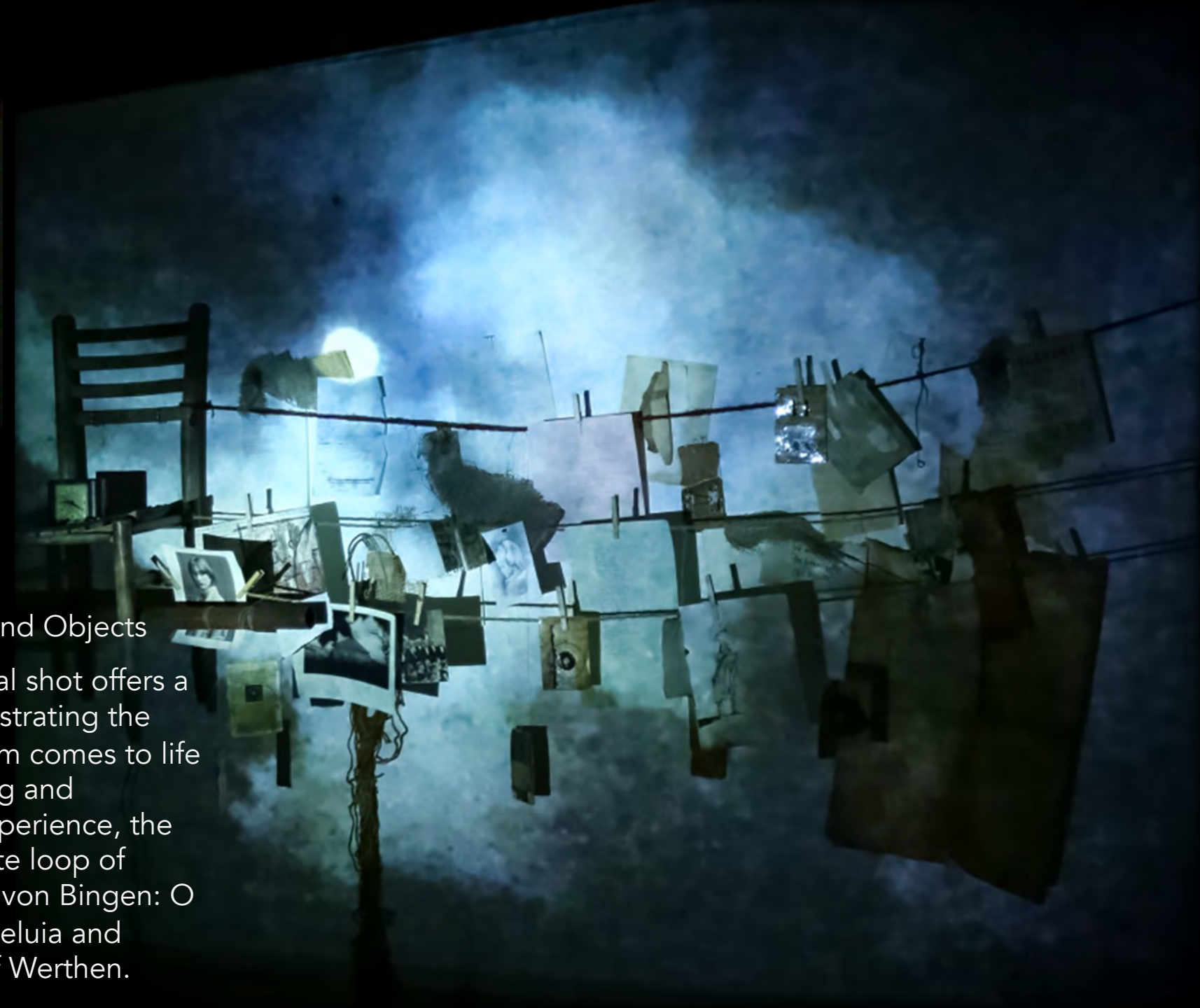
Life in Layers

2018

8' x 12' x 18'

Photography, Poetry, Drawings, Sound, Found Objects

A multi-media spatial installation. This partial shot offers a glimpse into the larger room installation illustrating the layers of life unfolding. In darkness, the room comes to life with projected photographic imagery, fading and changing. Accompanied by a rich sound experience, the installation's soundtrack features a 10-minute loop of voice and instrumental including Hildegard von Bingen: O eterne Deus and Hortus Deliciarum, and Alleluia and Fugue, Opus 40b by I Flammighi & Rudolf Werthen.





Giraffe

2019
30" x 12" x 10"
Ceramic



Elephant

2019
36" x 10" x 24"
Ceramic

Iterations
of a
Landscape
#4:
Crime
Scene

2021
3' x 12' x 20'
Ceramic,
Glass, Steel,
Prints, Found
Objects, Wire,
Tape.



Iterations of a
Landscape #6:
City

2021

3' x 12' x 12'

Ceramic, Glass, Steel,
Prints, Found Objects,
Wire.



Separation Entwined

2022

3' x 2' x 2'

Ceramic & Rope

Public Art

621 Huntington Ave.

Boston, MA



Countenance on the Art of Storytelling

2021

60" x 16" x 22"

Ceramic, Steel, Stool

Books written by Voltaire, Kant, Goethe,
Beethoven, Rilke, and Hemingway - The
Spoken Word, The Conscience of Words,
Speak, and High on the Wild.





Identity

2019

24-30" x 6" x 8"

Wire Armatures with Paper and Light,
Photography, Ceramic Sculptures



Co-Founder of Trikeenan
Tileworks: Award Winning
Ceramic Tile Manufacturer
1990– 2011

This Old House:
The Cambridge House
Master Bathroom
1 ½" x 3" in Vermont Green
2007

Designed 5 bathrooms for this
TOH project.

Awards won:

Best New Home Product, 2010
*Spectrum Award for Residential
Design, 2007*



Passing Through

2020

14" x 24" x 3"

Ceramic & Steel

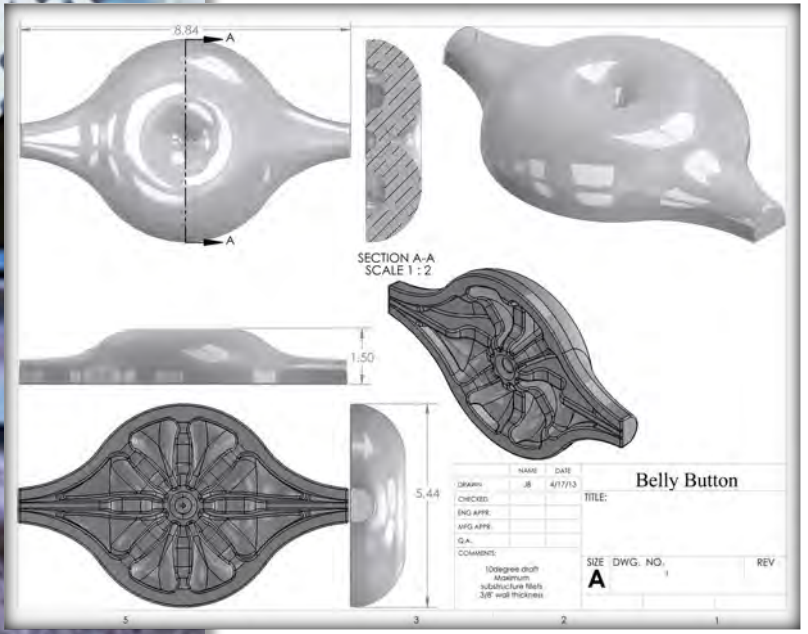




Belly Button
Wall Dividers
Standard
Hotel,
Los Angeles

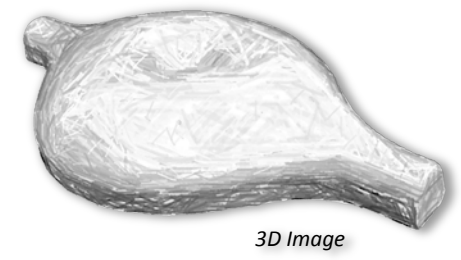
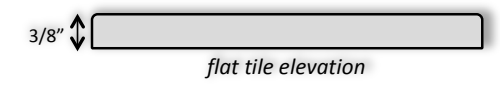
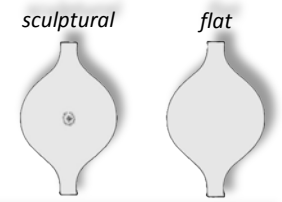
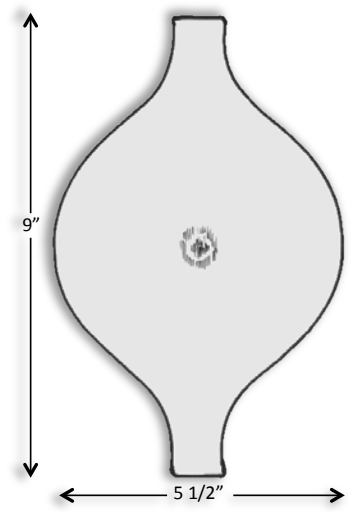
Contracted by
Eva Zeisel to
adapt a tile
collection
based on her
designs.

2008-2018
Ceramic
8 Designs in Wall
Dividers and Wall
Tile: Belly Button
shown here.

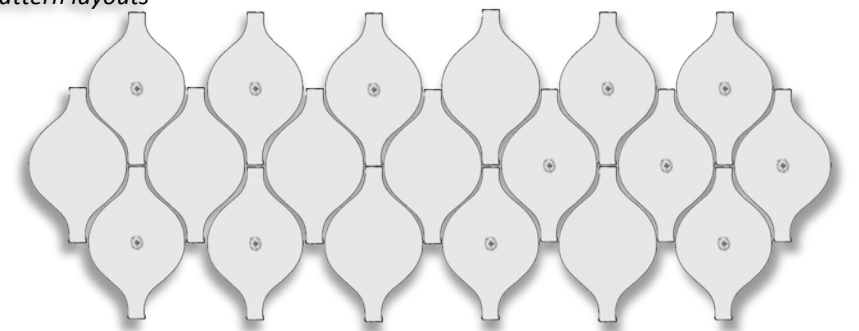


eva **zeisel**
tile collection

belly button



pattern layouts



Mercy West Hospital, Cincinnati, OH, 2011

Produced 126,000 8"x8" Glazed Thin Brick for 62,000 square feet of exterior cladding.

Designed 11 custom colours based on Rookwood Pottery.

Accolades:

- Brick in Architecture Awards: Best in Class – Health Care
- Society of American Registered Architects: Award of Excellence - National Design Awards
- Association of Licensed Architects: Merit Award
- ENR Midwest Awards: Best Project of the Year
- ENR Midwest Awards: Best Project - Healthcare
- Healthcare Design Magazine: Design Showcase
- IIDA Northland Chapter: FAB Award – Healthcare
- Ohio ASLA Design Awards: Merit Award
- Shaw Contract Group - Healthcare Market Award

"So well received, this visual gradation has been co-opted as a branding element — subsequently applied to other area Mercy facilities to reinforce the corporate identity that signifies Mercy Health."

best-projects-project-of-the-year-mercy-health-west-hospital-thinkchamplin.com/hospital-mercy-health

